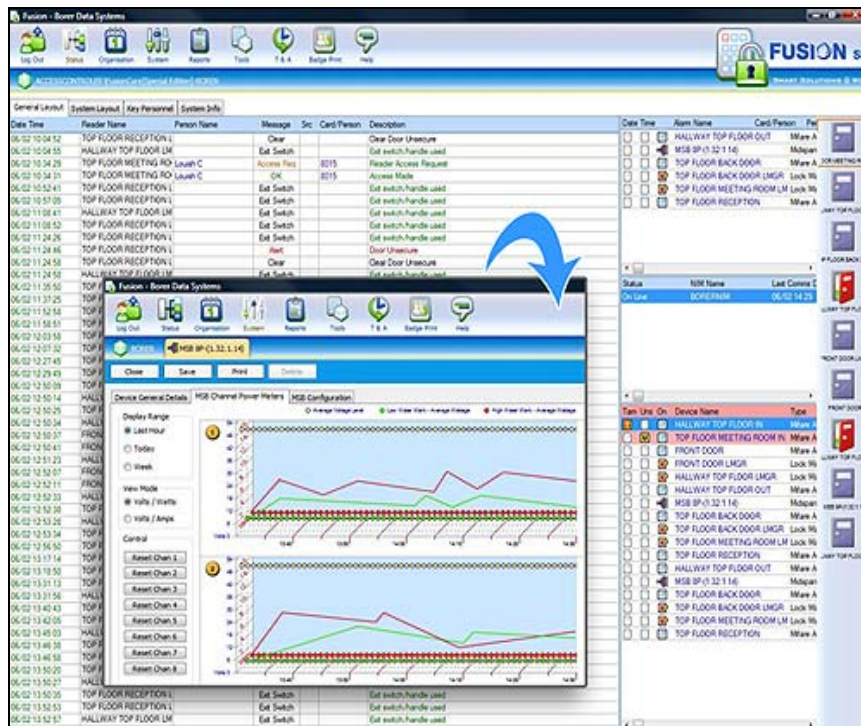


Release date: February 2008



## NEW VERSION OF ACCESS CONTROL SOFTWARE PROVIDES BIG-COMPANY SOLUTIONS FOR SMES

***FUSION SE access control software now available FREE with hardware to the smaller organisation***

FUSION is the world's first security access control system to manage and monitor the delivery of both power and data to intelligent smart card readers and door locks over a company's IP cable network infrastructure.

The latest version of the system - FUSION SE (Special Edition) - is free of charge to installations with fewer than 50 personnel so smaller companies can now benefit from a scalable and technologically advanced access control systems which is also energy efficient.

FUSION SE software provides Windows Vista compatibility, look and feel with 3D imagery. It handles access control, photo I/D, Photo Capture and Badge Design, all managed from a single client PC.

FUSION, which has been developed using a 'clean design' policy, combines:-

- “Plug and play” smart card access control readers;
- Intelligent management of power distribution combined with sophisticated monitoring and reporting of energy usage;

- Power delivery over CAT5/6 network cables;
- Advanced diagnostics combined with remote administration via a TCP/IP network.

All of these elements are designed to minimise installation and commissioning effort and reduce service visits.

Small is beautiful – the intelligent smart card reader, weighing just 90 grams, is an all-in-one door card access control solution measuring only 120 x 78 x 26mm. Each reader has full on-line and off-line card validation for up to 120,000 card holders with decision making at the point of swipe, eliminating the need for a separate control panel, wall box and the fitting of a mains power supply at every door.

NEW features include:

~ **PowerWise power management built-in for energy efficiency:** This technology enables all door equipment to be powered over a single Cat5 Network cable. Enough energy is provided for two card readers (IN and OUT) and double magnetic lock or heavy duty electric release. Uniquely, the software monitors power usage and manages power delivery ensuring that the cabling can never be over-loaded, protecting equipment against short circuit or cable polarity reversal, eliminating the risk of supplying too much current thereby overheating and damaging the data cable.

~ **The FUSION software automatically builds a connectivity schematic plan/map of the complete system** which is automatically updated whenever hardware is added or relocated.

~ **Advanced Diagnostics:** The software employs predictive maintenance which uses the system schematic and energy usage tables to continually monitor the health of the entire system.

FUSION will work 24/7 to give access, identify security breaches and reporting on problems. These can be sent by email to the systems administrator. The combination of remote administration and advanced diagnostics assists in the prompt identification of problems avoiding needless engineer visits.

FUSION SE is the first of a new generation of software applications designed to enhance security, reduce energy consumption and facilitate ease of customer support and maintenance.

----- **ends** -----

## **BACKGROUND**

Borer Data Systems design and manufacture market-leading access control, attendance management and alarm monitoring systems and software. The company consistently strive to innovate within the market sector in which they operate.

**For Environment**, Borer has committed to a 'Clean Design' policy which ensures that its products are highly energy-efficient; have low environmental impact during manufacture, and consume the minimum amount of materials.

**For Users**, Borer security solutions feature its powerful, web-enabled facilities control software which enables organisations of virtually any size to run and manage all their facilities and building information applications for the entire enterprise through a single system. Applications include:

- Access Control
- Attendance Recording
- ID Badge Production
- Visitor Management
- Alarm Monitoring
- Locker Management

**For Installers** Borer TCP/IP systems are configured to run over the LAN Cat5 Cable Network bringing significant advantages including much reduced installation time, elimination of mains cabling to access doors and simpler maintenance.

**All Borer products meet** current and pending EU directives such as RoHS (Restriction of the Use of Certain Hazardous Substances); WEEE (Waste Electrical and Electronic Equipment) and the new EuP (Energy using Products) Directive.

**Mifare** is an open standard (ISO 14443A) technology which enables a single card can be used for several applications including: banking, travel card, cashless vending, access control and attendance recording.

### **Editorial enquiries to:**

Clive Husselbury or Sheila Lloyd, Shere Marketing Tel 01483 209304  
email: [slloyd@sheremktg.co.uk](mailto:slloyd@sheremktg.co.uk)

### **Issued on behalf of:**

Borer Data Systems Limited  
Crown House  
Toutley Road  
Wokingham RG41 1QN

Tel: 0845 155 9623  
Fax: 0118 977 3526  
[www.borer.co.uk](http://www.borer.co.uk)